

Triga M



Triga M 1700↓ × 780↔ SX
colour: Modern Grey

3-axis thermostatic valve set, left, chrome
Integrated pipe-masking set, chrome



TERMA

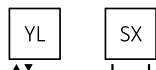
SINCE 1990



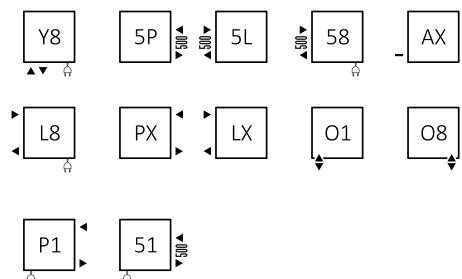
Triga M



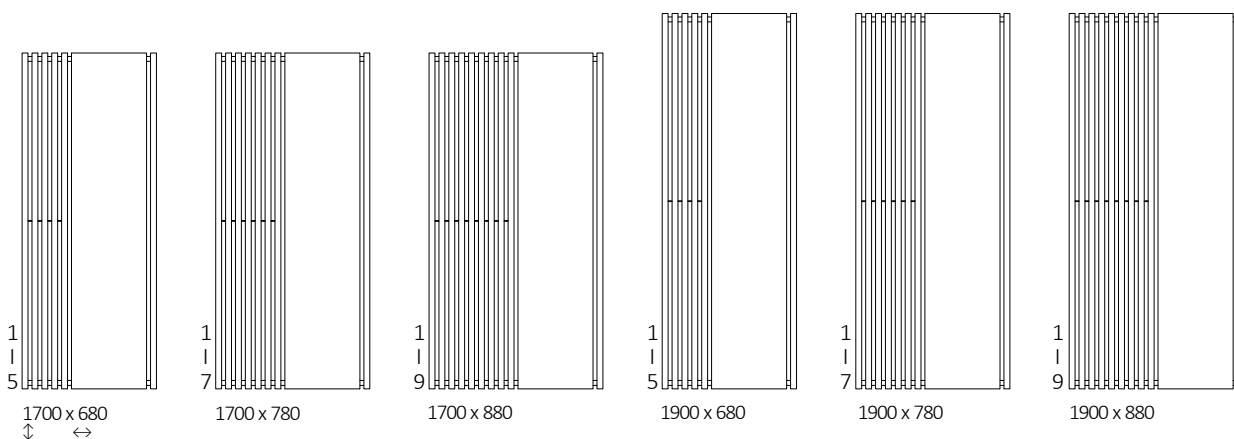
Standard connection:



Optional connection:



Available sizes:



Specification:

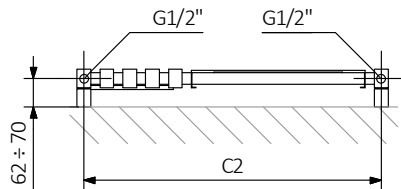
Working pressure: 800 kPa Maximum operating temperature: 95°C

A ↓ [mm]	B ↔ [mm]	C1 [mm]	75/65/20°C [W]	55/45/20°C [W]	☺ [W]	D [mm]	E [mm]	F [mm]	H [dm³]	📦 [kg]	Product code <small>Configuration code p. 5</small>
1700	680	50	646	332	600	650	1520	90	10,55	29,21	WGTRL170068
1700	780	50	850	437	800	750	1520	90	13,97	34,89	WGTRL170078
1700	880	50	1074	552	1000	850	1520	90	17,39	40,56	WGTRL170088
1900	680	50	721	369	800	650	1720	90	11,75	32,49	WGTRL190068
1900	780	50	961	492	1000	750	1720	90	15,57	38,81	WGTRL190078
1900	880	50	1202	615	1200	850	1720	90	19,39	45,12	WGTRL190088

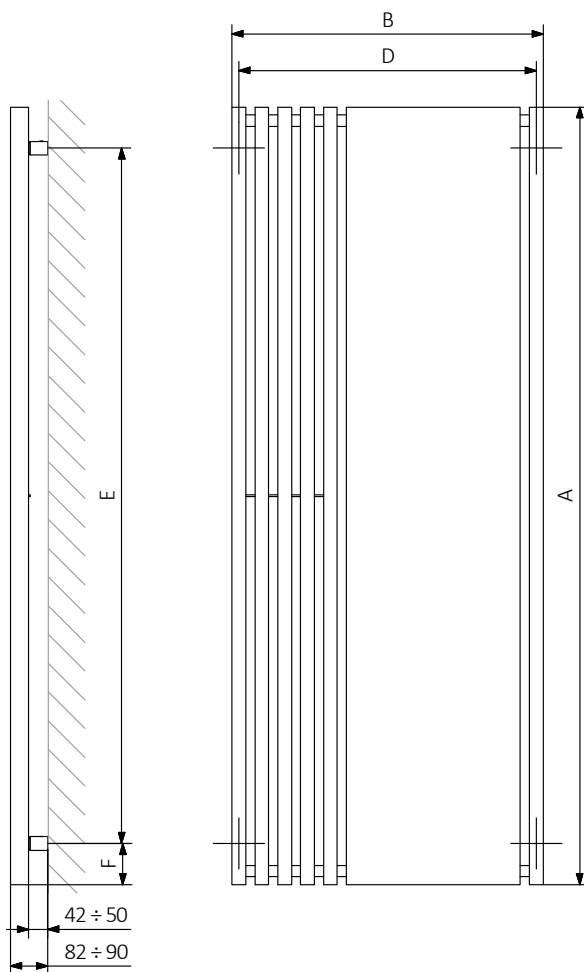
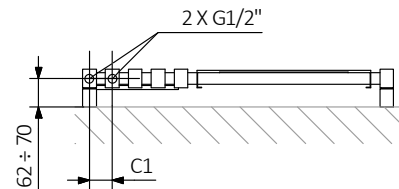


Technical drawing:

SX



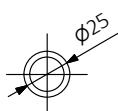
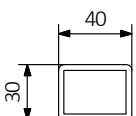
YL



A – Height B – Width C1-C5 – Distance between pipe centres D – Horizontal distance between mounting bracket centres
E – Vertical distance between mounting brackets F – Distance between a mounting bracket and the bottom of the radiator

Collector:

Pipe:





In the table with technical data, the last column lists product codes. When placing an order, please remember to quote the product code followed by the configuration code as shown in the diagram below:

The construction of a water and dual fuel radiator product and configuration code:

WGTRL170068

K916SX

PRODUCT CODE
(located in the table for the product)

CONFIGURATION CODE
(supplemented by hand)

Example Configuration

K **916** **SX**

Package code

Colour code

Connection code

K - carton box

Epoxy primer

E – Code of epoxy primer is an extra processes.

WGTRL170068 K916SX **E** — *Extra processes or additions code*

Triga M



Legend



Radiator available in a "water" version.



Radiator suitable for dual fuel connection. Electric heating element can be installed.



Radiator available in electric only version. It comes prefilled with a 'heating medium' and equipped with a heating element. All tested and ready to use.



Connection types dedicated for this radiator. The icon shows the flow and return connections for the radiator as well as the thermostatic valve and heating element position if applicable.



Suggested heating element power output for electric and dual fuel versions.



Weight.



Capacity.



Available in chrome finish.



No additional payment for a color.